

SEE Electrical Installation Manual

Copyright

Copyright (c) March 2015 IGE-XAO. All rights reserved. No material of this manual, or any portion of it, shall be reproduced, transcribed, saved or translated, under whatever form and by whatever means, without the written authorization from IGE-XAO+XAO, 16 Boulevard Déodat de Séverac, CS 90 312, 31 773 COLOMIERS CEDEX, FRANCE.

CONTENTS

SEE ELECTRICAL INSTALLATION MANUAL	1
A INSTALLATION OF SEE ELECTRICAL V8R1	4
A.1. HARWARE AND OPERATION SYSTEM	4
A.1.1. <i>Minimal Configuration</i>	4
A.1.2. <i>Recommended Configuration</i>	4
A.2. RIGHTS DURING INSTALLATION.....	4
A.3. INSTALLATION PROCESS.....	5
B LOCATION OF THE SEE ELECTRICAL INSTALLATION FILES	9
C INSTALLATION OF WORKSPACES, SYMBOLS AND TEMPLATES IN A NETWORK IF NO SEE ELECTRICAL HAS BEEN INSTALLED BEFORE	10
D UPDATING FROM AN EXISTING SEE ELECTRICAL VERSION (V5R1, V6R1, V7R1 OR V7R2).	10
E INSTALLATION OF WORKSPACES, SYMBOLS AND TEMPLATES IN A NETWORK IF OLDER VERSION OF SEE ELECTRICAL HAS BEEN INSTALLED BEFORE	12
F CONVERSION OF EXISTING USER DATA WHEN USING VERSION V4R1 AND OLDER VERSIONS OF SEE ELECTRICAL	13
G USING V8R1 AND OLDER VERSIONS OF SEE ELECTRICAL IN PARALLEL	15
H STARTING OF SEE ELECTRICAL.....	15
I ACTIVATION OF THE LICENCE	15
J LIVE UPDATE – PROGRAM UPDATES	16

A INSTALLATION OF SEE ELECTRICAL V8R1

Install the version into an empty folder! It is not possible to overwrite an existing old version! Depending on whether *SEE Electrical* was already installed, or not, follow the instructions below in this chapter. There you will also find information about which parts of the *SEE Electrical* software must be moved to a network directory, what is the procedure when *SEE Electrical* data is used by several users or it is simply installed on a drive.

A.1. HARWARE AND OPERATION SYSTEM

A.1.1. MINIMAL CONFIGURATION

- ✓ *Windows Vista*
- ✓ Simple Core 1,9GHz processor
- ✓ Live memory (RAM) : 1GB
- ✓ Required free disk space: 10GB

A.1.2. RECOMMENDED CONFIGURATION

- ✓ *Windows Vista SP2, 7 or Windows 8*
- ✓ Dual Core processor
- ✓ Live memory (RAM) : 4 GB
- ✓ Required free disk space: 10 GB
- ✓ Graphic card: Intel / Matrox / ATI any processor with internal memory not less than 1 GB and minimum resolution 1024 x 768, strongly recommended Full HD

Note:

The machine must have a free USB 2 port for the dongle and a CD - ROM in case of installation from a CD.

A.2. RIGHTS DURING INSTALLATION

If you work with Administrator and User profiles, there are two procedures for installing and licensing:

- ✓ *The software must be installed, and the dongle programmed under the Administrator's account.*

If the user logs on as "**User with limited rights**", rights for full access or rights for editing the main directory and all subdirectories of *SEE Electrical* must be given from the Administrator.

If you use the "**Safe mode**" or "**Backup**" function, this has to be also done for the "\$projects" and "Temp" folders in the *SEE Electrical* folder. (These folders are not generated during the installation but are automatically generated on the first execution of the "**Safe mode**" or "**Backup**" functions.).

If *Windows Home* version is used, it is not possible to enhance the rights for restricted users in the folders. In this case we recommend that you install the program in the *User Documents* folder, because here even users with restricted rights have enough rights.

- ✓ *The User profile must receive Administrator rights during the installation and programming of the dongle. The Administrator rights can be removed after installing and licensing.*

However, if the user works with the "User with limited rights" property, the administrator must give full access and modification rights for the whole *SEE Electrical* main directory.

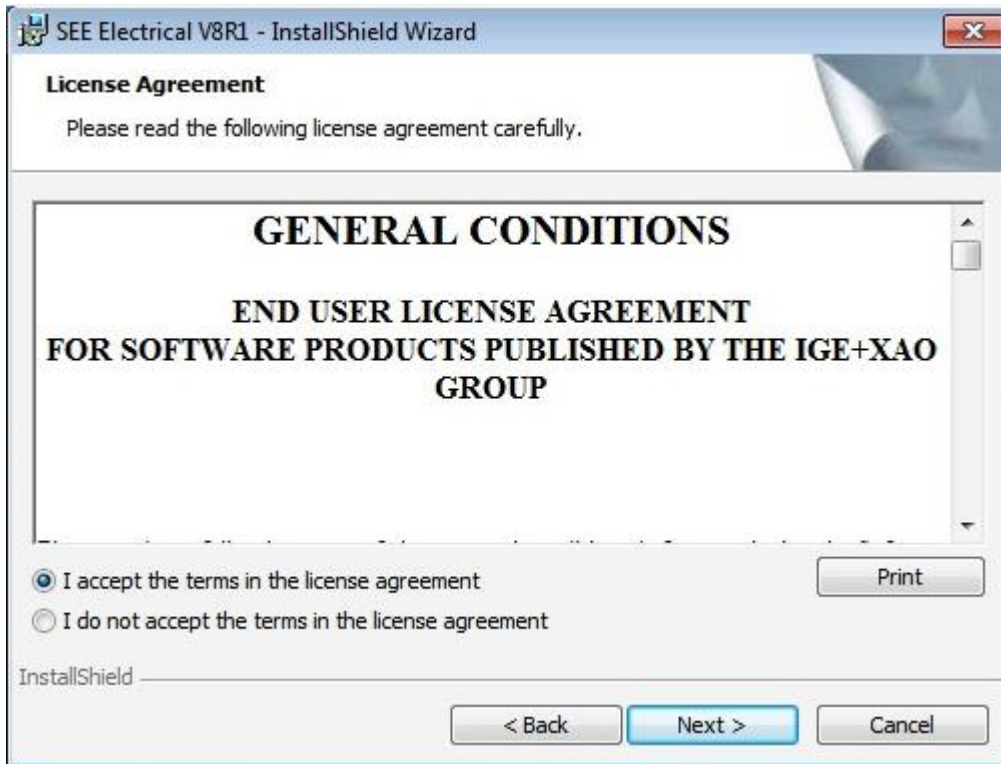
A.3. INSTALLATION PROCESS

Insert the CD of *SEE Electrical* that you have received from your local distributor or double click the installation file.

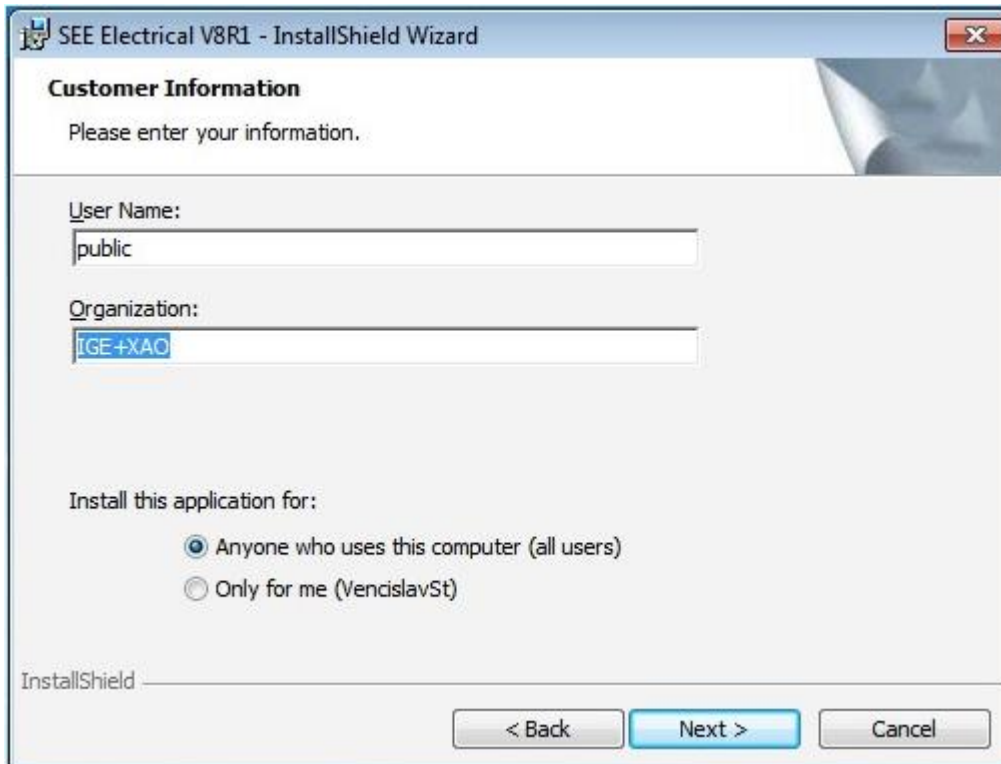
The **Welcome** window appears.



- Click **Next** to proceed.



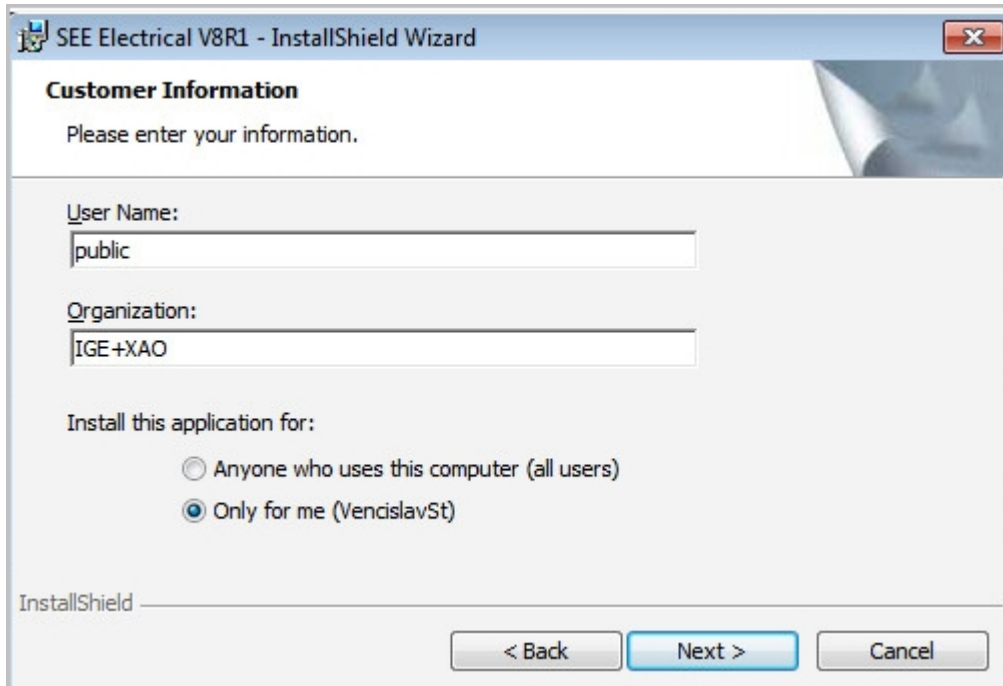
- Read carefully the *User rights Concession* agreement. Check the **"I accept the terms in the license agreement"** option and click **Next** if you want to proceed.



- Insert the user name and the organization.

You can select who will use this software.

- Select the **"Anyone who uses this computer"** option to allow to all users access to the program.
- Select the **"Only for me"** option to allow access only to the current user.



- Click **Next** to proceed.



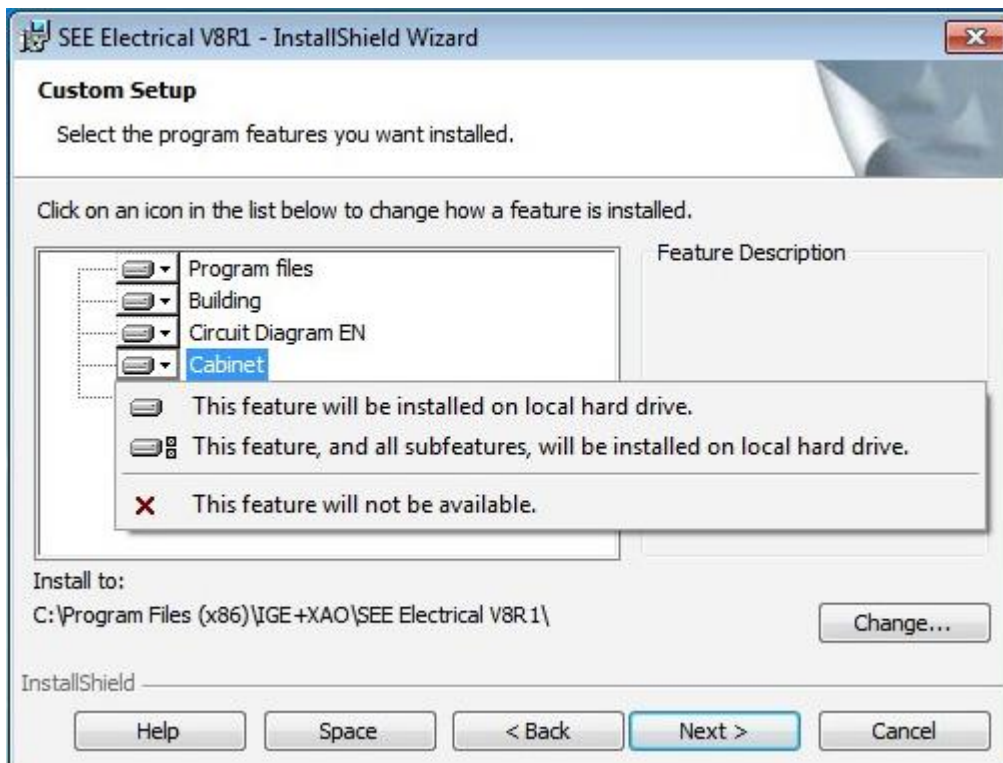
Installation Manual

COPYRIGHT © 2015 IGE+XAO. All rights reserved

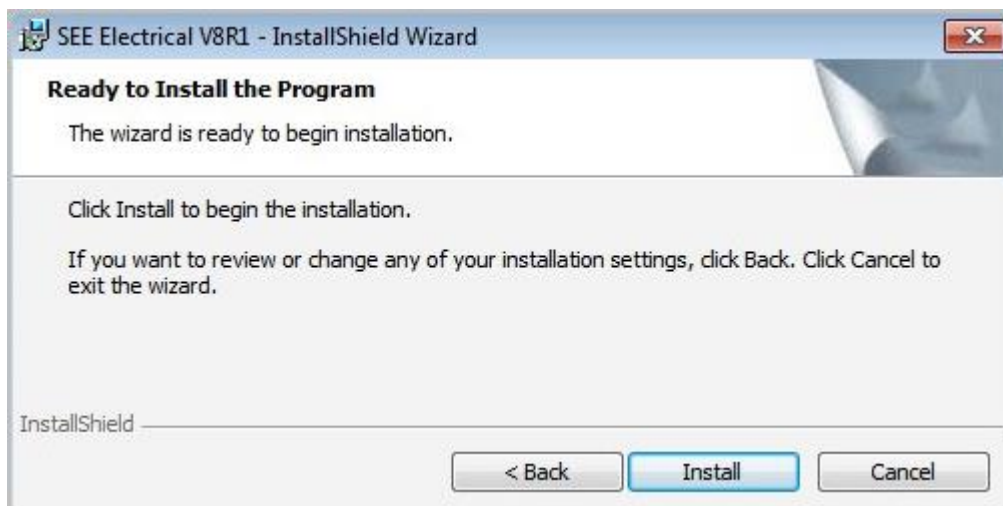
- Select the type of installation.
"Complete" will install the typical parameters.

Note:

If you select **"Custom"** you can choose which parameter to install and also change the installation directory.



- Choose an option and click **Next**.



- Click **Install** to begin the installation of the software.
- After the installation has been completed, click **Finish** to exit.
- Restart your computer if necessary.

- Unlock the software.

Depending on whether your version is protected with a Softlock or with a Dongle or a local license server, you will find more instructions for the unlocking procedure in the appropriately named file in your *SEE Electrical* folder, in the *DOCUMENTS*\ subdirectory.

If an older version of *SEE Electrical* has been used you need to overtake your data. How to do this depends on version used before. Please refer to notes on this below in this document.

B LOCATION OF THE SEE ELECTRICAL INSTALLATION FILES

After the installation the files are located in the following directories:

The **Program files** are located in the installation folder of *SEE Electrical*:

C:\Program Files (x86)\IGE+XAO\SEE Electrical V8R1

The **Protection files** are located in the installation folder of *SEE Electrical*:

C:\Program Files (x86)\Common\IGE+XAO\SeeProtection

The **Settings and temporary files** (such as *System.SEM*, *XML* setting files, *OGI* files) are located in the *Public documents* folder:

Users\Public\Documents\IGE+XAO\SEE Electrical\<V8R1>

The user files (**Projects, Templates, Symbols**) are located in the *Public documents* folder:

Users\Public\Documents\IGE+XAO\SEE Electrical\V8R1\...\Projects

Users\Public\Documents\IGE+XAO\SEE Electrical\V8R1\...\Symbols

Users\Public\Documents\IGE+XAO\SEE Electrical\V8R1\...\Templates

You can access the user data through the available options in the **Windows Start menu > SEE Electrical** folder.

C INSTALLATION OF WORKSPACES, SYMBOLS AND TEMPLATES IN A NETWORK IF NO SEE ELECTRICAL HAS BEEN INSTALLED BEFORE

Copy the contents of the ...*Projects*, ...*Symbols* and ...*Templates* directories into the desired network drive. Here rights must exist for writing, reading, modifying and creating files. We recommend you to delete or rename the local directories ...*Projects*, ...*Symbols* and ...*Templates*.

- Start *SEE Electrical*.
- From the File menu press the **System settings** button
- Open the **Directories** tab.
- Enter the new directories.

D UPDATING FROM AN EXISTING SEE ELECTRICAL VERSION (V5R1, V6R1, V7R1 OR V7R2)

First secure your data!

It is not possible to update an existing version of *SEE Electrical* to the new one. If you do not want a parallel installation, please uninstall the existing version before you install one.

A parallel installation of old and new versions of *SEE Electrical* is possible, but you have to install the new one in its own folder.

However, it should be noted that projects, page and project templates, type databases and symbol libraries that have been opened with the new version, cannot be processed using an older version of *SEE Electrical*.

- ✓ Make a backup copy of your data **before the uninstallation/installation** procedure: Save the contents of the directories ...*Projects*, ...*Symbols*, ...*Templates* (*please see notes below*).
- ✓ If you use a softlock, free the licence of older version before uninstalling old/installing new one.

If you should uninstall the old version after the installation of the new one, it might happen that files used by both versions are removed. In this case you have to install the new version again. Take care of your data!!! Additionally you have to execute *Protection.VBS* in the folder of the new *SEE Electrical* version to register the proper *Proteccion.dll* for Windows.

Notes for the Symbols directory:

Copy the symbol libraries you changed yourselves. The *Types.SES* contains type information, so copy this too.

The "*System.Ses*" and "*List of text placeholders.ses*" files must not be applied because these files are related to the version.

The OGL files from the directory ...*Symbols* is also related to the version and must not be saved. No OGL files will be present in future versions.

Notes for the Templates directory:

Files to save:

- ✓ *Wires.msw* (database of wire properties)
- ✓ *Translation.mdb* (translation database)
- ✓ *Cables.mdb* (user defined cable database)
- ✓ If you have not created any user defined cable symbols, we do not recommend you to save the *Cables.mdb* file.
- ✓ All files with the endings **.tdw*, **.txt*, **.dat*
- ✓ Files with endings **.sep* (if you made workspace templates for yourselves)
- ✓ The **.cds*, **.LbL*, **.Lbp*, **.Lbv*, **.Lst*, **.Lsv*, **.Lsp*. files for the "Lists and labels" module

Please open your workspace templates and page templates once in the new version, so they have the new data format.

Important!!!: The *Templates* folder in *SEE Electrical V8R1* only contains user data! This means that no *.dll*, *.SYSTEM.sem* and *.ext* files should be present in the folder.

Note:

If you transfer data from an older version of *SEE Electrical* than *V5R1*, you must convert the files. You will find instructions for converting the data under "Conversion of data from *V4R1* and older version".

Copy the saved data again into the proper directories.

E INSTALLATION OF WORKSPACES, SYMBOLS AND TEMPLATES IN A NETWORK IF OLDER VERSION OF SEE ELECTRICAL HAS BEEN INSTALLED BEFORE

A parallel installation of older version and V8R1 version of *SEE Electrical* is possible. However, it should be noted that projects, page and project templates, type databases and symbol libraries that have been opened with version V8R1, cannot be processed using an older version of *SEE Electrical*. Therefore, we do not recommend you the parallel installation, if symbols, templates and projects are stored on the network, unless a strict separation can be guaranteed!

- If you use a softlock, free the licence of *the older version* before installing *SEE Electrical* V8R1.

All workstations must be changed simultaneously.

- Make a backup before you perform an uninstall or reinstall:
- Save the contents of the directories ...*Projects*, ...*Symbols*, ...*Templates* in the network!

Notes for the Symbols directory:

The "*System.Ses*" and "*List of text placeholders.ses*" files must not be applied because these files are related to the version.

If you have not created any user defined cable symbols, we recommend you not to convert the *Cables.ses* file because this file already exists in the current version.

The OGL files from the directory ...*Symbols* is also related to the version and must not be saved. No OGL files will be present in future versions.

Notes for the Templates directory:

Files to save:

- ✓ *Wires.msw* (database of wire properties)
 - ✓ *Translation.mdb* (translation database)
 - ✓ *Cables.mdb* (user defined cable database)
 - ✓ If you have not created any user defined cable symbols, we do not recommend you to save the *Cables.mdb* file.
 - ✓ All files with the endings *.tdw, *.txt, *.dat
 - ✓ The *.cds, *.LbL, *.Lbp, *.Lbv, *.Lst, *.Lsv, *.Lsp. files for the "*Lists and labels*" module
-

Copy the contents of the new folders ...*Symbols* and ...*Templates* from *SEE Electrical* V8R1 to the server and then copy the secured data of your old version.

Important!!!: The *Templates* folder in *SEE Electrical* V8R1 only contains user data! This means that no *.dll*, *.SYSTEM.sem* and *.ext* files should be present in the folder.

F CONVERSION OF EXISTING USER DATA WHEN USING VERSION V4R1 AND OLDER VERSIONS OF SEE ELECTRICAL
First secure your data!

Because data is now stored in an *Access 2000* database, it is necessary to convert all the files that have been based on an *Access* database in the past: projects, libraries, additional databases.

The Converter for old projects, symbols and additional databases (Wire database (*WIRES.MSW*), Cable database (*CABLES.MDB*) and Translation database (*TRANSLATION.MDB*) - all in templates directory), into *Microsoft Access 2000* format is located in the *SEE Electrical* folder. Its name is "*CADdy2SEP.EXE*". You will also find the converter in the *Windows Start* menu in the group "***SEE Electrical V8R1***".

Please copy your old files in the directories used for *SEE Electrical V8R1* (by default "...\projects, ...\symbols, ...\templates") before starting the converter. The converter will replace them by files in *Access 2000* format. The old files are copied into a folder "*Backup*" beneath the folder where they have been.

New file names:

Description	Old Name	New name	Folder (Default)
Workspaces	*.cpj	*.sep	...\projects
Cable database	Cable.mdb	CableNew.mdb	...\templates
Wire database	Wires.msw	Wires.mdb	...\templates
Translation database	Translation.mdb	TranslationNew.mdb	...\templates
Symbol libraries	*.cps	*.ses\symbols

(The default settings for the converter are located in the master project "*_Convert.c2s*" in *SEE Electrical* folder. If you want to add specific *SQL*-queries or add user defined project information texts to all the converted projects, this master project can be changed. To do so, rename it to *SEP* as extension, treat it as a normal project and rename it back).

Handling in Converter:
Copying projects:

- Select the ***Convert Projects*** tab in the ***Project Converter***.
- Press the **Add** button and select the projects (*.cpj) and the project archives (*.cpa) that you want to copy in the new version. Start the conversion process by pressing the **Convert** button.

- Convert your own project templates from the old templates directory. Set the correct target directory, so the project templates will be stored to the templates directory of the new version after the conversion.

Copying symbols:

- Select the **Convert symbols** tab in the **Project Converter**.
- Press the **Add** button and select symbol libraries (*.cps), such as *My Symbols.ses* and *Types.ses* that you want to copy in the new version and overwrite the existing files.

Notes:

The files *System.cps* and *List of Text placeholders.cps* may not be copied, because these files are version-dependent.

If you have not created any user defined cable symbols from version V4R1, we recommend that you do not convert *Cables.cps*, too, because the file is already present in the new version in expanded form.

- Start the conversion process by pressing the **Convert** button and overwrite the existing files.

Copying databases:

- Select the **Convert database** tab in the **Project Converter**.
- Select the following files from the templates directory of the old version:
 - ✓ *Wires.msw* (connection properties database), *Translation.mdb* (translation database), *Cables.mdb* (user defined cable database, if it already exist in your version).

If you have not created any user defined cable symbols from the V4R1, we recommend you not to convert the *Cables.mdb*.

- Start the conversion by pressing the **Convert** button and overwrite the existing files.

Copying templates:

Via the *Windows Explorer* (from the templates directory of the old version to the templates directory of the new version), copy all files with the extensions *.tdw, *.txt, *.dat and for the "Lists and Labels" module (if existing) the *.cds, *.LbL, *.Lbp, *.Lbv, *.Lst, *.Lsv, *.Lsp and overwrite the existing files.

Unlock the free software. Depending on whether your version is protected with a soft lock or with a dongle, find more hints for unlocking in the appropriately named file under your SEE Electrical installation in the subfolder "... \ Documentation \ Activation \" or by CD delivery on your SEE Electrical CD in the subdirectory DOCUMENTS \ D \ ACTIVATION.

- If necessary, remove the old version of *SEE Electrical* before you install the new one. If you want to keep old version, the installation of new one must be made in a new directory, you cannot install it over an existing version of *SEE Electrical*.

G USING V8R1 AND OLDER VERSIONS OF SEE ELECTRICAL IN PARALLEL

If you want to use SEE Electrical V8R1 in parallel with older versions of the software, please check the **License with local dongle.doc**, **License with server dongle.doc** and **License with Software key from internet.doc** guides located in your installation *DOCUMENTS* folder.

H STARTING OF SEE ELECTRICAL

After the installation you can start *SEE Electrical* in the *Windows Start menu* via "**Programs**" > "**IGE+XAO**" > "**SEE Electrical**". Additionally an icon has been added to desktop.

Important

If you use **Windows Vista**, **Windows 7** or **8** and you want to link the shortcut to the project data in the operating system, you must run the software as Administrator.

To do this, right click the program icon of *SEE Electrical* and select **Run as Administrator** in the pop-up menu. Confirm the security message with **Allow** and close the program again.

I ACTIVATION OF THE LICENCE

Before you begin work, you must unlock your version.

The unlocking of the software can either be via a soft lock or via a dongle (hard lock). The management of multiple *SEE Electrical* licenses in a network (floating licenses) is possible via a network dongle or a local license server (Local License Server).

You can find how to activate your license under your *SEE Electrical* installation in the subfolder ... \ *Documentation*. Please open the file that contains the description for the activation method used by you.

If you want to license a dongle, check the **License with local dongle.doc** or **License with server dongle.doc** guides located in your installation *DOCUMENTS* folder.

If you want to license your *SEE Electrical* software with a software key, please check the **License with Software key from internet.doc** or **License with Software key from local server.doc** guides located in your installation *DOCUMENTS* folder.

If you want to license *SEE Electrical V8R1 Free*, please check the **Licensing SEE Electrical Free guide** located in your installation *DOCUMENTS* folder.

J LIVE UPDATE – PROGRAM UPDATES

The *Live Update* automatically logs in the time intervals at the start of the *SEE Electrical* software and checks the appropriate patches for the installed version by an active Internet connection.

To run the *Live Update* completely, you need the serial number and the license password of your license, a valid maintenance agreement and an Internet connection, that allows a communication to our update server on port 80 (http) and port 21 (FTP).

If you insert the *Environment Synchronizer* module of *SEE Electrical*, you cannot use the live update. In this case, your administrator must provide you the files. Please in this case, contact your local *SEE Electrical* distributor.