



ETAP

Company Overview

Brand Messaging

Vision, Purpose and Mission

Our vision:

the outcome we aim to drive

Lead the energy transition towards a cleaner more resilient world for the future generations

Our purpose:

what we actually do

We drive Sustainability through Continuous Intelligence

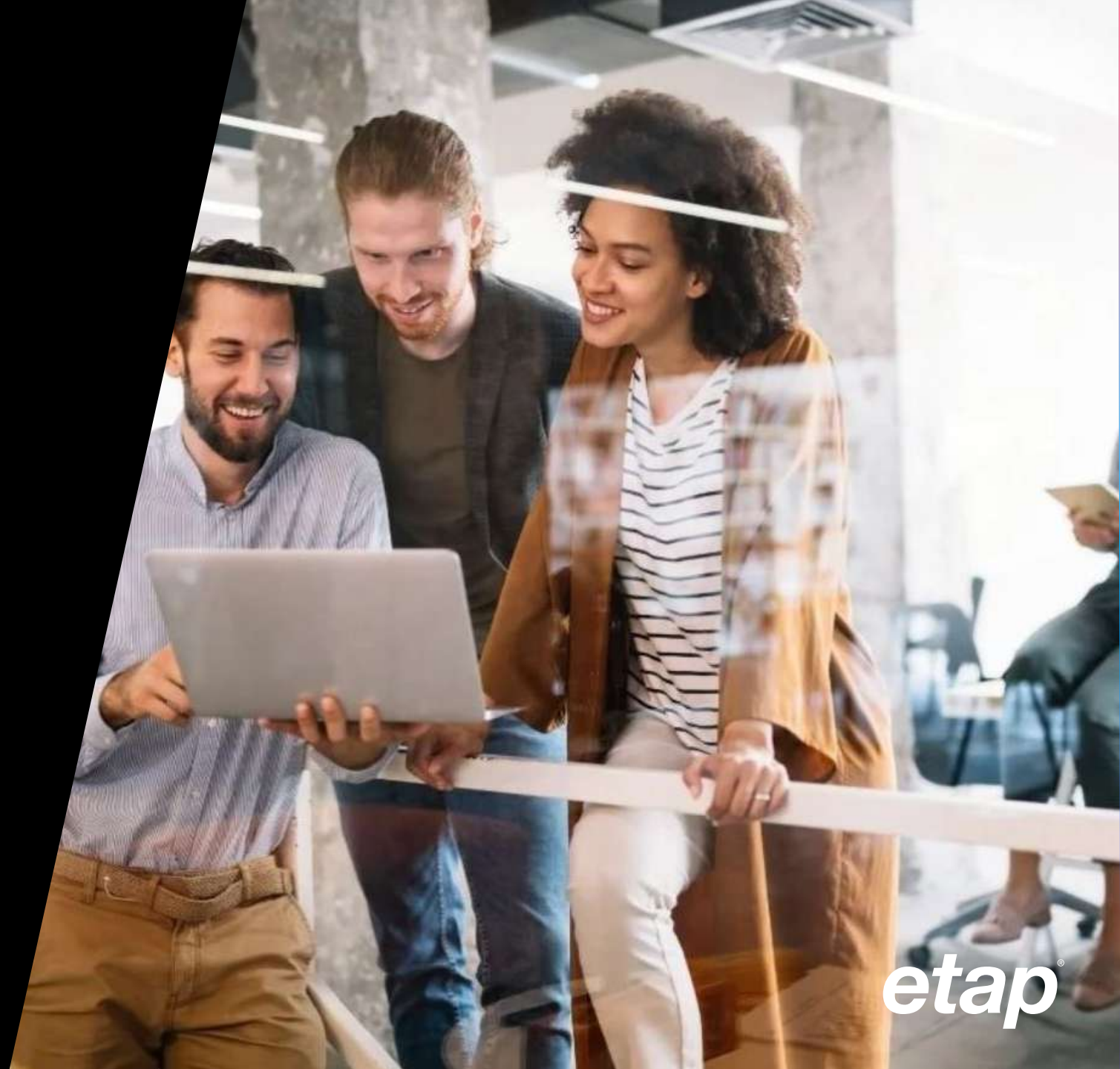
Our mission:

our approach to delivering this purpose

To bring the best user experience with the highest quality standards enabling our customers to Design with Precision, Build with Efficiency and Operate with Confidence

Brand Messaging
Our Values

- Excellence
- Trust
- Ambitious
- Pragmatic



We are Powering Digital Energy Transformation

Safe • Sustainable • Reliable • Resilient • Efficient

#1

Undisputable leader for
Electrical Design portfolio

30+

Leading software solutions
with strong market recognition

35

Years of excellence

1,000+

Passionate people
40% in R&D

20,000+

Customers worldwide

220,000+

Licenses, perpetual & subscription

100+

Quality audits

1,000,000+

Vendor Agnostic Libraries

Across the Global Energy Landscape

Leading players trust ETAP



The diversity of our customers drives our **innovation, quality, and leadership** in the Energy Transformation market

The diversity of our customers drives our **innovation, quality, and leadership** in the Energy Transformation market

Design Firm/ EPC		Power and Grid		Energy & Chemicals		Transport		Manufacturing			Datacenters	

All of the **Top 10 Electrical Design Firms** Rely on ETAP



Customer Challenges

Inefficiencies exist across the system lifecycle

+20%

Suboptimal power system increases budget and footprint

Up to 40%

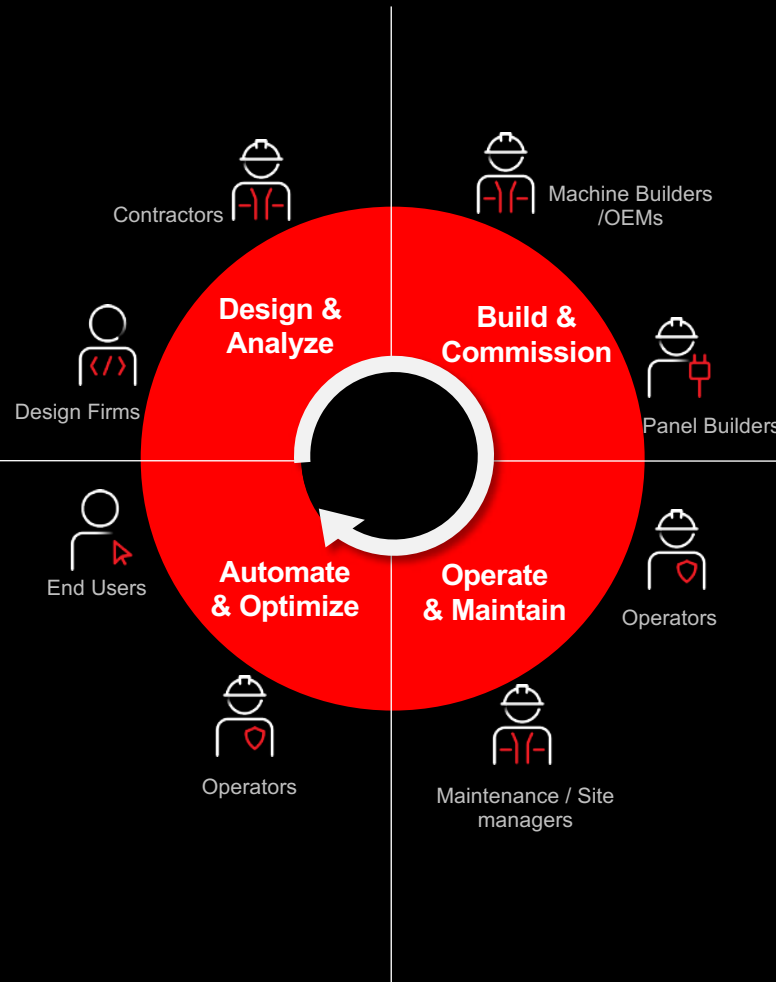
Additional manhours needed for executing projects without appropriate engineering software

\$38M

Average annual cost of unplanned downtime

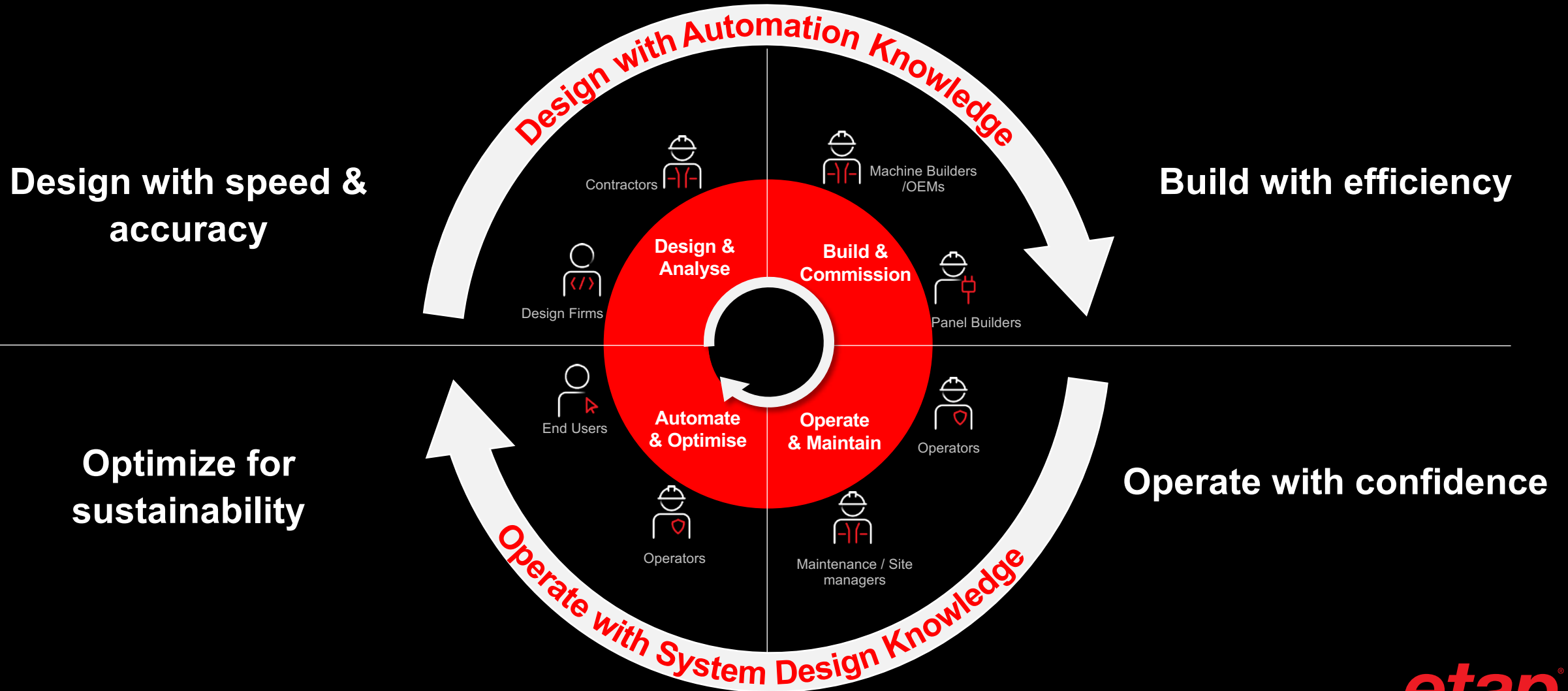
Up to 50%

Of total cost related to manpower, maintenance, and energy costs



ETAP Digital Twin Driven Solutions

Accelerate digital energy transformation from Design to Operate



ETAP offer portfolio

Exceptional user experience with highest quality standards

Advance BIM Design

- Plan
- Design
- Design for Sustainability
- Optimize
- Document

Calculation and Schematics

- Cable Routing
- Selectivity
- LV System
- Lighting

Electrical System Simulation

- MV/HV Design
- AC & DC Simulation
- RMS
- Steady State
- Dynamic
- EMTP

Automate

- Microgrid Control
- Power Plant control
- Intelligent load shedding

Optimize & Enhance

- Asset Management
- Remote Support
- AI/ML
- RT Analytics

Sustainability Analysis

- Optimization
- Reliability
- Techno-Economic
- Specification
- Green Energy
- Asset Model

System & Electrical Design

- 2D & 3D Panel
- Harness & Wiring
- Sizing & Optimization
- Digitalization

Simulation & Electrical Manufacturing

- P&ID
- Shop Floor
- Manufacturing
- Configuration

Automation Engineering & Validation

- Automation
- HMI Prep
- Training
- Validation
- PLC Design
- Configuration

Monitor & Control

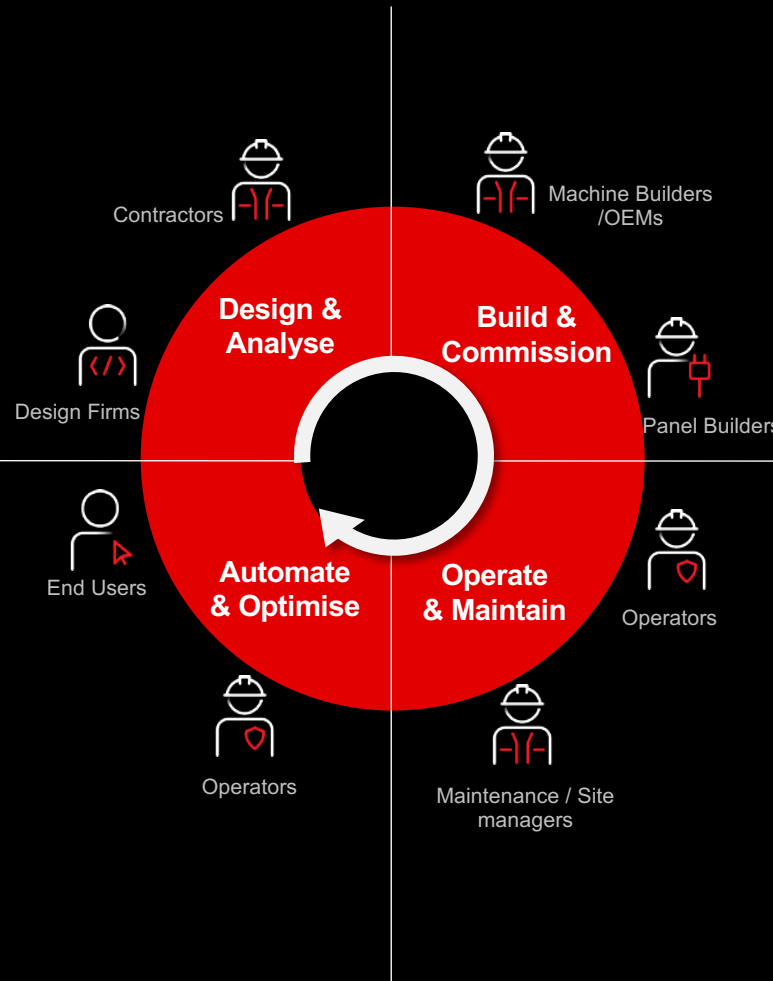
- SCADA
- Energy Management
- OTS
- Control
- Predictive Analysis
- Awareness

Maintain

- On-the-fly documentation generation
- Schematics or 3D Visualization
- On-site maintenance

Digital Documentation

- Engineering Info
- Digital Documents
- 2D/3D view
- Standards



ETAP offer portfolio

Exceptional user experience with highest quality standards

Advance BIM Design

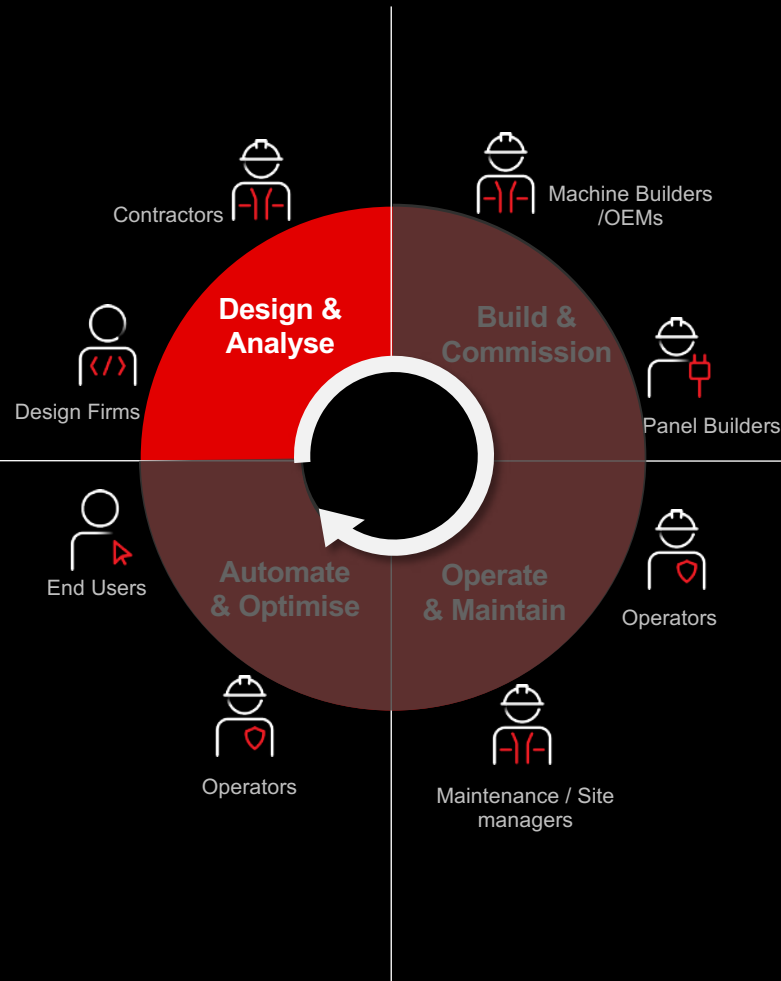
- Plan
- Design
- Design for Sustainability
- Optimize
- Document

Calculation and Schematics

- Cable Routing
- Selectivity
- LV System
- Lighting

Electrical System Simulation

- MV/HV Design
- AC & DC Simulation
- RMS
- Steady State
- Dynamic
- EMTP

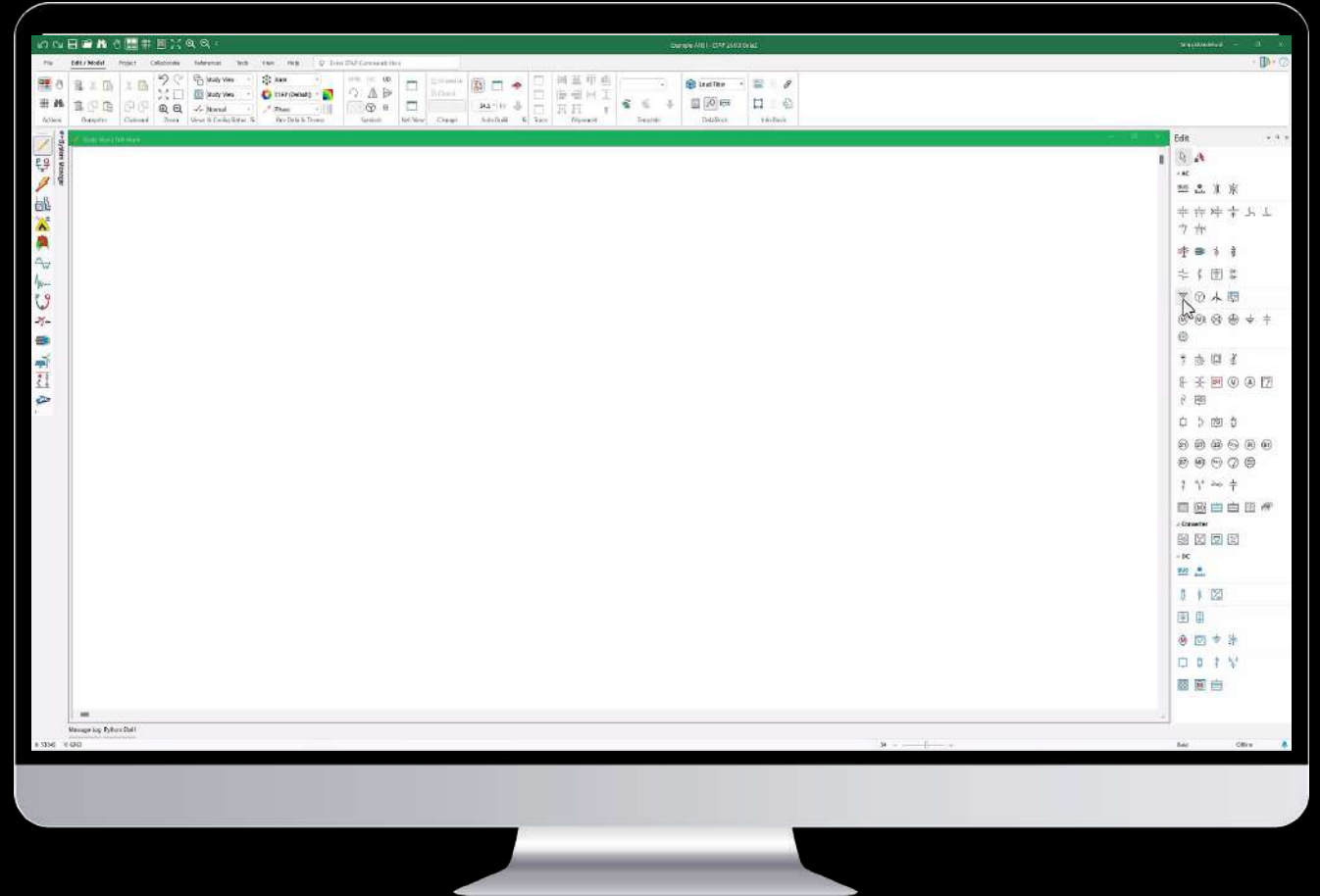


Fast & Efficient Electrical Design & Analysis

Market leading **model driven power system design** and analysis platform for AC & DC systems from low to high voltage

- Arc flash
- Short circuit
- Load flow
- Renewables
- Grid Interconnection
- Microgrid
- Harmonics
- Reliability
- Voltage stability
- Motor starting
- Battery sizing
- Transient stability
- Flickermeter
- ...

140+
Modules

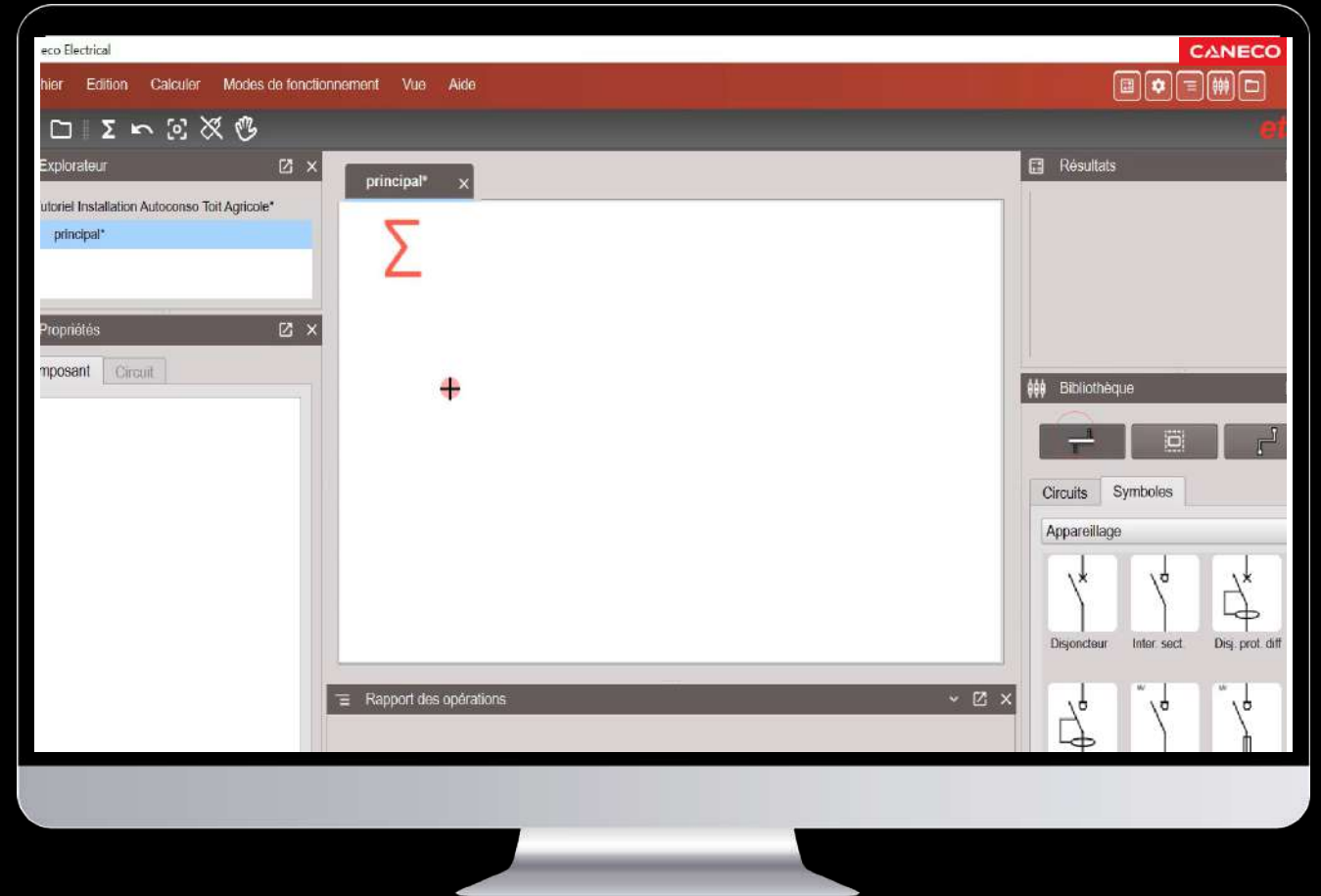


etap[®]

Standards driven Electrical design for LV applications

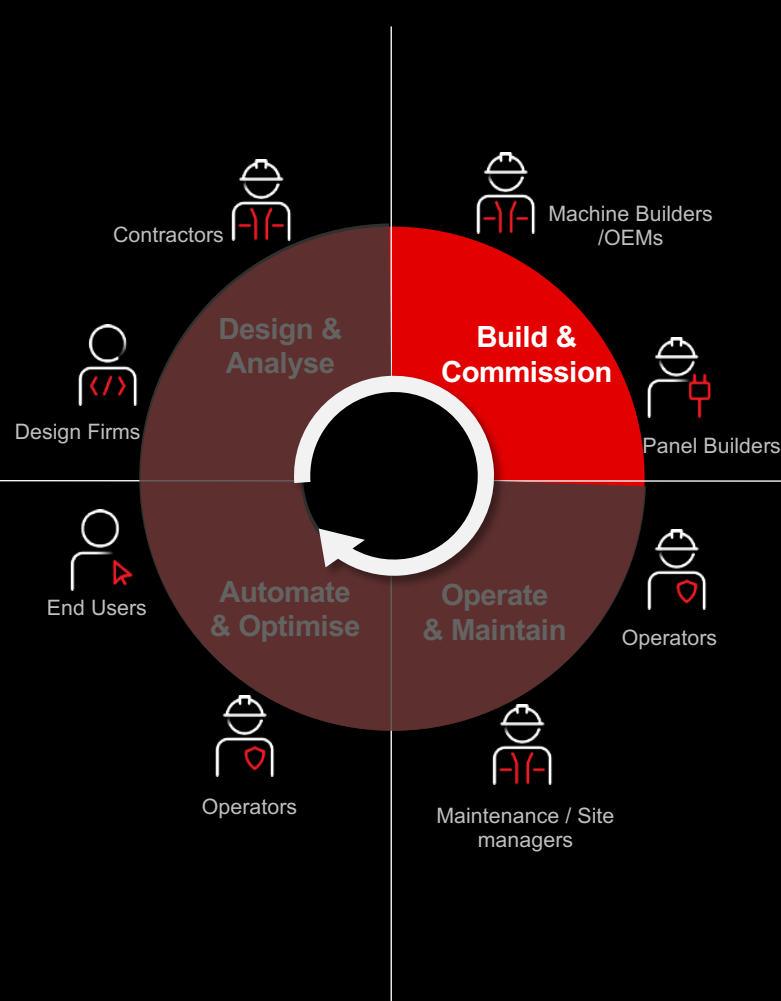
Comprehensive software for electrical engineers to efficiently design, **complete Low-Voltage calculations**, and seamlessly deliver specifications

- Comply with national and international Standards
- Complete tool kit for BIM based electrical design
- Integrated software for 2D/3D modeling, calculation and schematics
- Design PV systems for buildings or solar farms combining DC and AC architectures
- Save time and money, by collaborating efficiently in the project



ETAP offer portfolio

Exceptional user experience with highest quality standards



System & Electrical Design

- 2D & 3D Panel
- Harness & Wiring
- Sizing & Optimization
- Digitalization

Simulation & Electrical Manufacturing

- P&ID
- Shop Floor
- Manufacturing
- Configuration

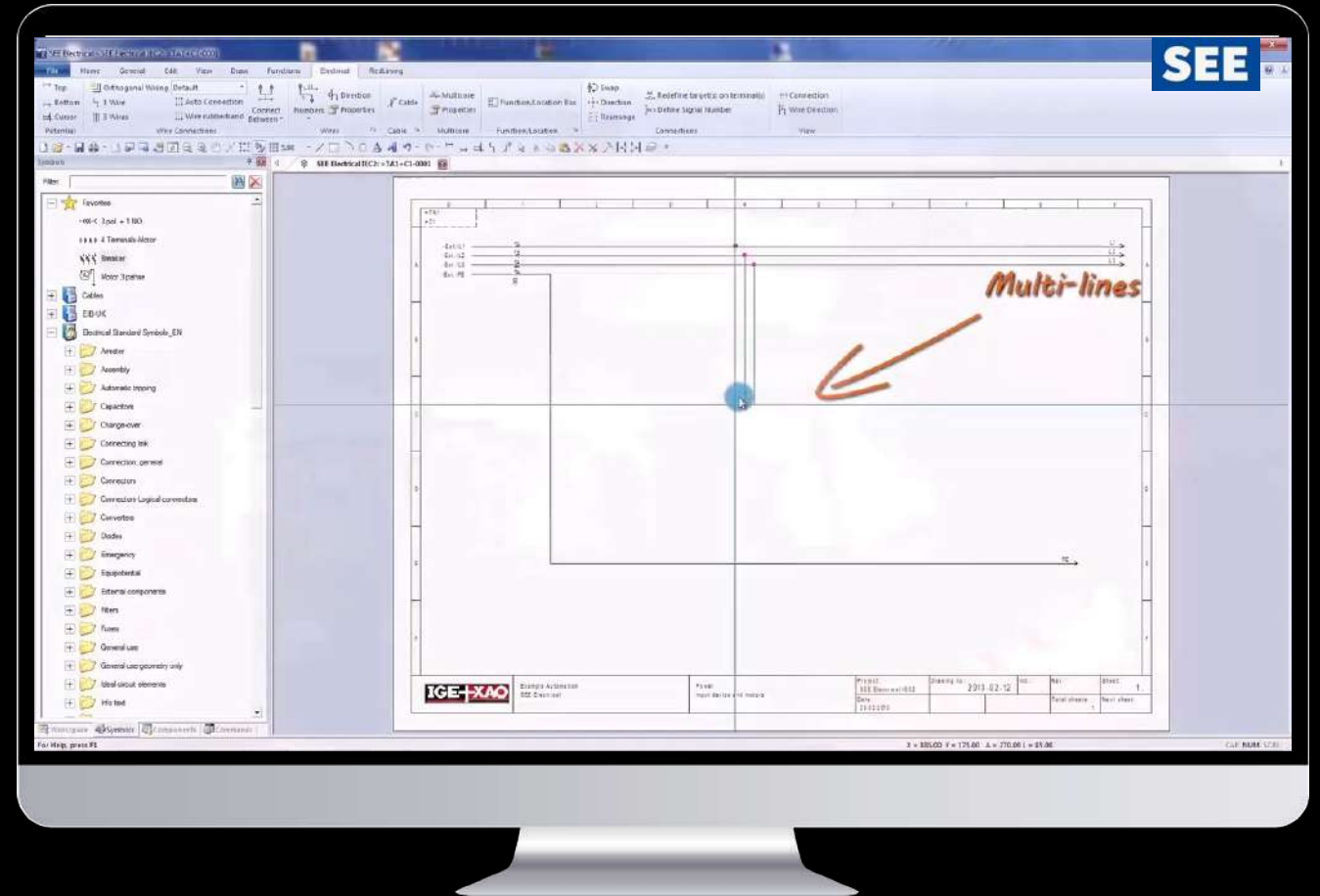
Automation Engineering & Validation

- Automation
- HMI Prep
- Training
- Validation
- PLC Design
- Configuration

Efficient electrical design, schematics and wiring for panels and machines

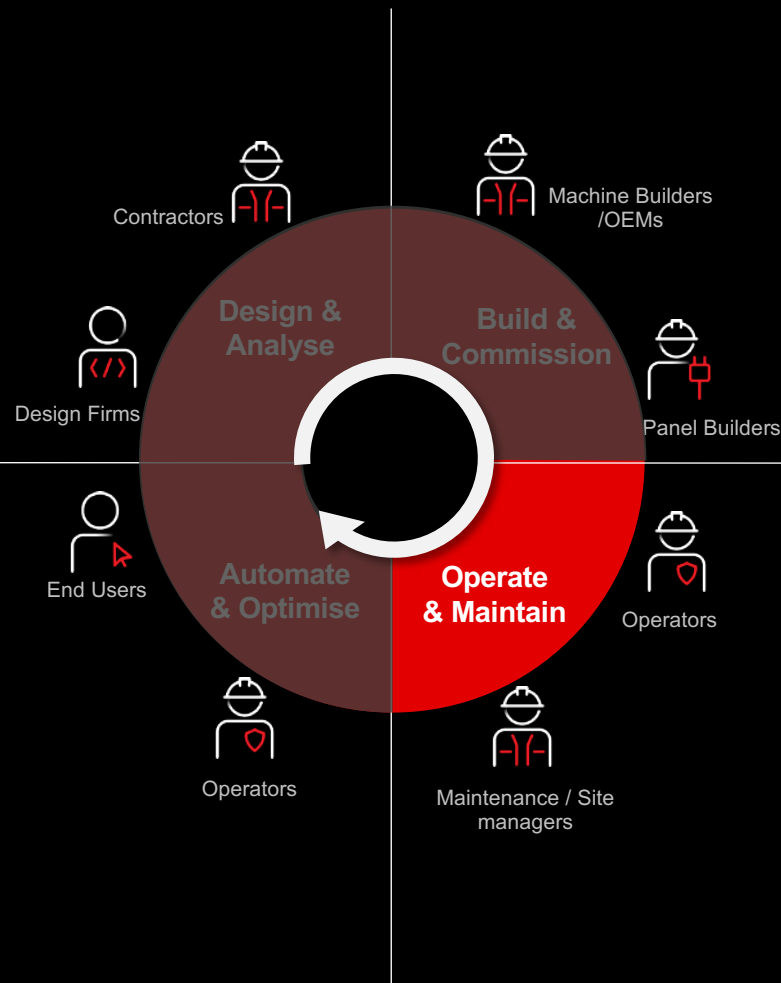
Advanced schematic software, to efficiently **create and edit electrical and automation drawings**.

- **Improved Efficiency** - Streamline the electrical design process, reducing errors, and saving time
- **Improved Productivity** - Easily generate your completed documentation, seamlessly collaborate with co-workers and business partners
- **Improved Accuracy** - Perform detailed schematics tasks in an intuitive tool with automation features.



ETAP offer portfolio

Exceptional user experience with highest quality standards



Monitor & Control

- SCADA
- Energy Management
- OTS
- Control
- Predictive Analysis
- Awareness

Maintain

- On-the-fly documentation generation
- Schematics or 3D Visualization
- On-site maintenance

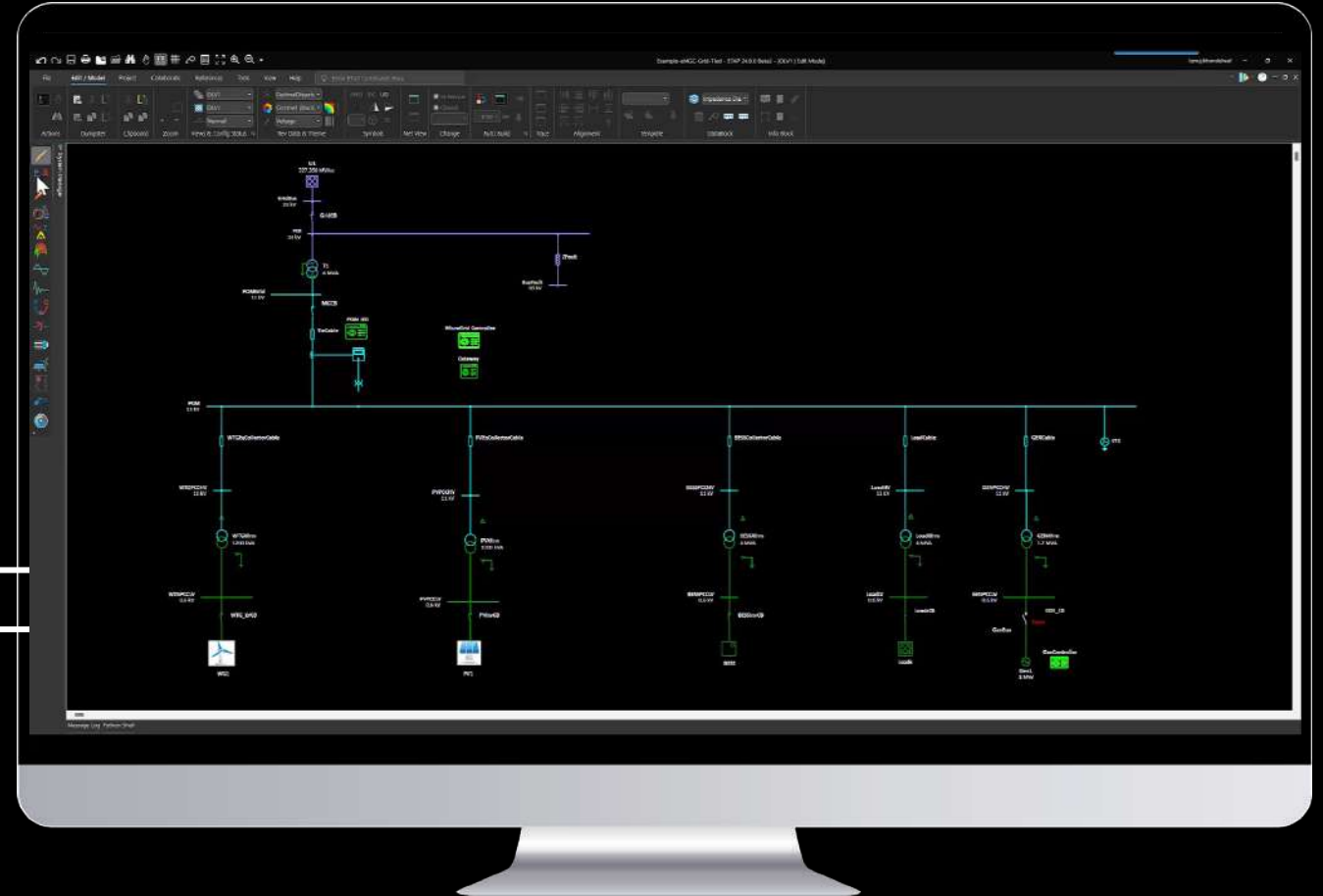
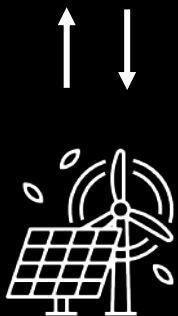
Digital Documentation

- Engineering Info
- Digital Documents
- 2D/3D view
- Standards

Electrical Analysis with Automation Knowledge

Develop and Deploy the Automation Logics Natively from Design Tool

- **Design & Validate:** Assessment and continuous audit of actual operation versus expected response
- **Compliance & Reporting:** Maintain industry standard compliance and regional requirements
- **Situational Intelligence:** Understand the past and present for informed decision making



etap[®]

Operate & Maintain with Design Knowledge

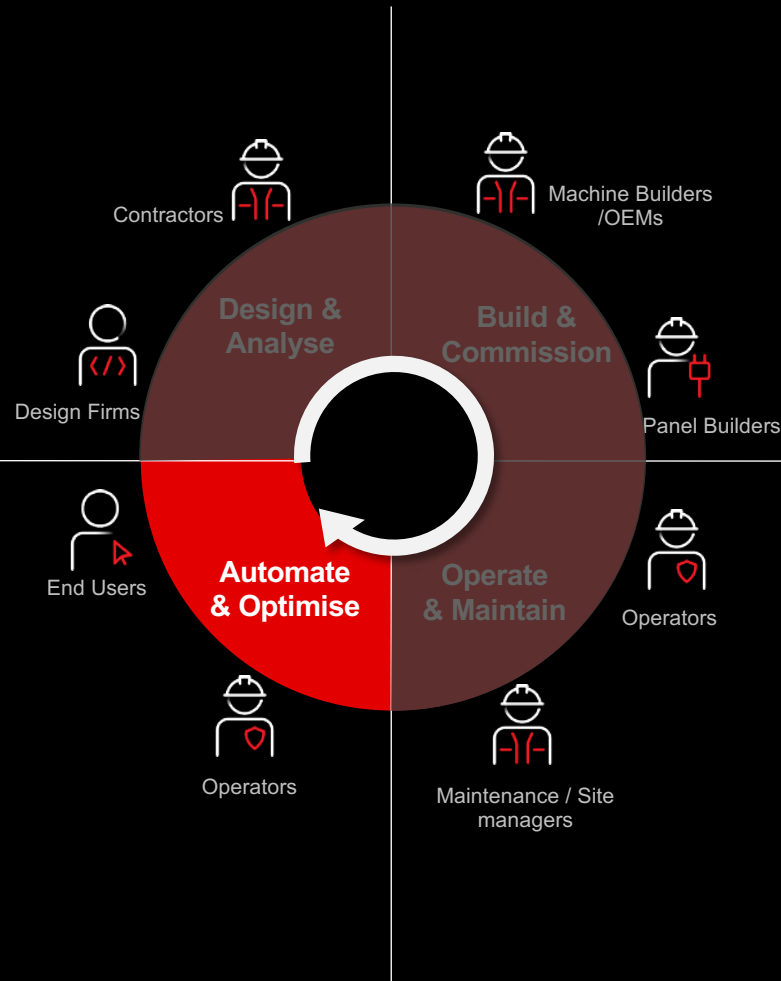
ETAP Digital Twin represents **virtual models of a real-world power system** under various physical and operational conditions.

- Intuitive real-time visualization
- Comprehensive analyses platform via intelligent graphical user interface
- Integrate one-line diagram, geospatial view, and digital dashboards.



ETAP offer portfolio

Exceptional user experience with highest quality standards



Automate

- Microgrid Control
- Power Plant control
- Intelligent load shedding

Optimize & Enhance

- Asset Management
- Remote Support
- AI/ML
- RT Analytics

Sustainability Analysis

- Optimization
- Reliability
- Techno-Economic
- Specification
- Green Energy
- Asset Model

Validation & Optimization

Continuous Intelligence with Analytics for Optimized Operation

Dynamic System Management & Dynamic Parameter Estimation monitors the functional and performance targets

- Monitors the operating conditions against the design set points
- Manages and tunes the system's dynamic behavior on continuous time series basis
- Provides the optimized settings to meet the KPIs

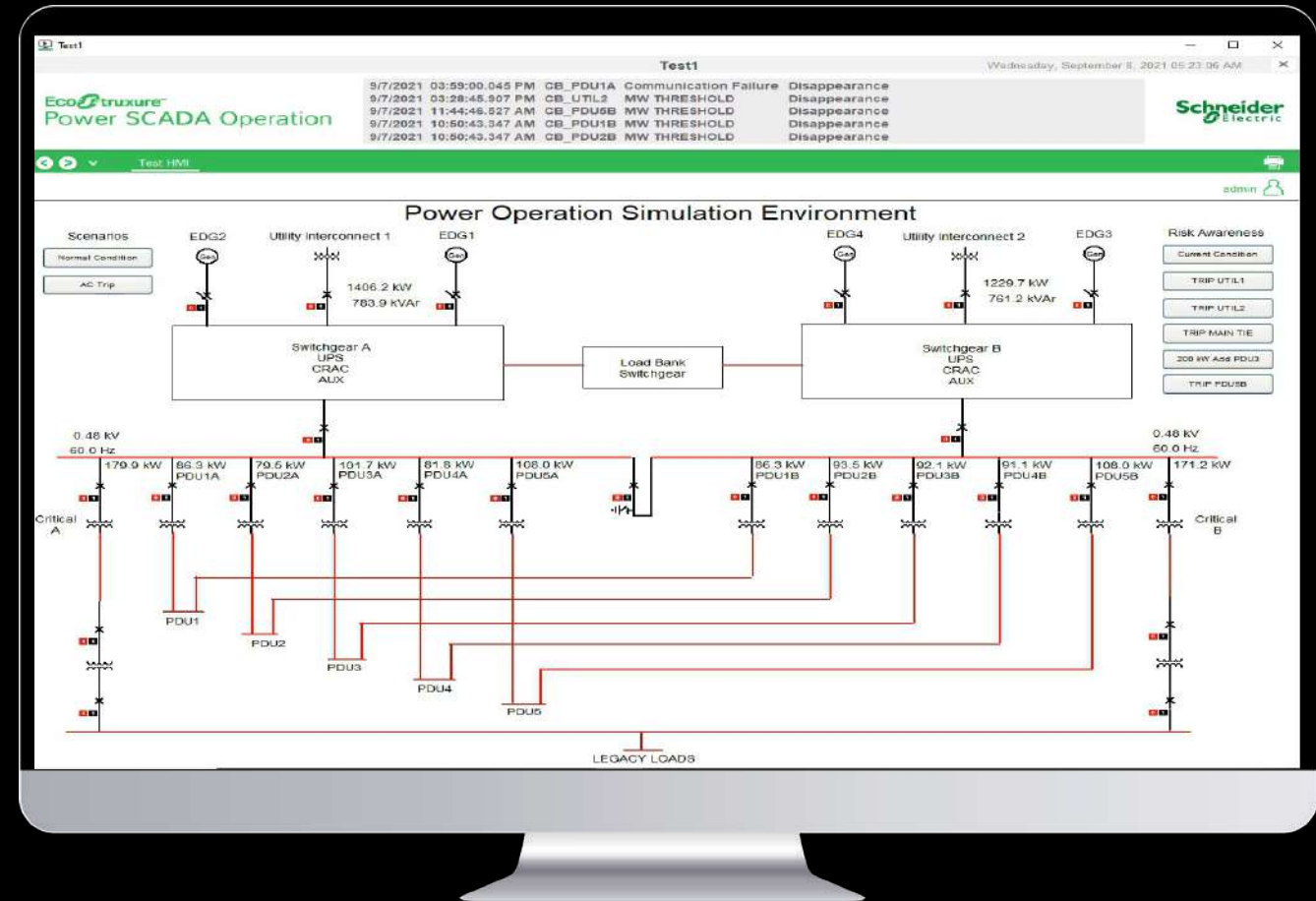


Predictive Analysis & Operator Training

Electric Digital Twin-Driven Operator Training Simulator

Prescribe with SE PSO to provide model-driven offer vs. competition and doubles up as SIL or commissioning system.

- Predict system response based on operator actions
- Recognize and correct potential hidden problems
- Preparing Operators to Respond to Malfunctions and Emergencies
- Effectively Certify and Confirm Operator Readiness
- Improve system safety & security through real-world simulations

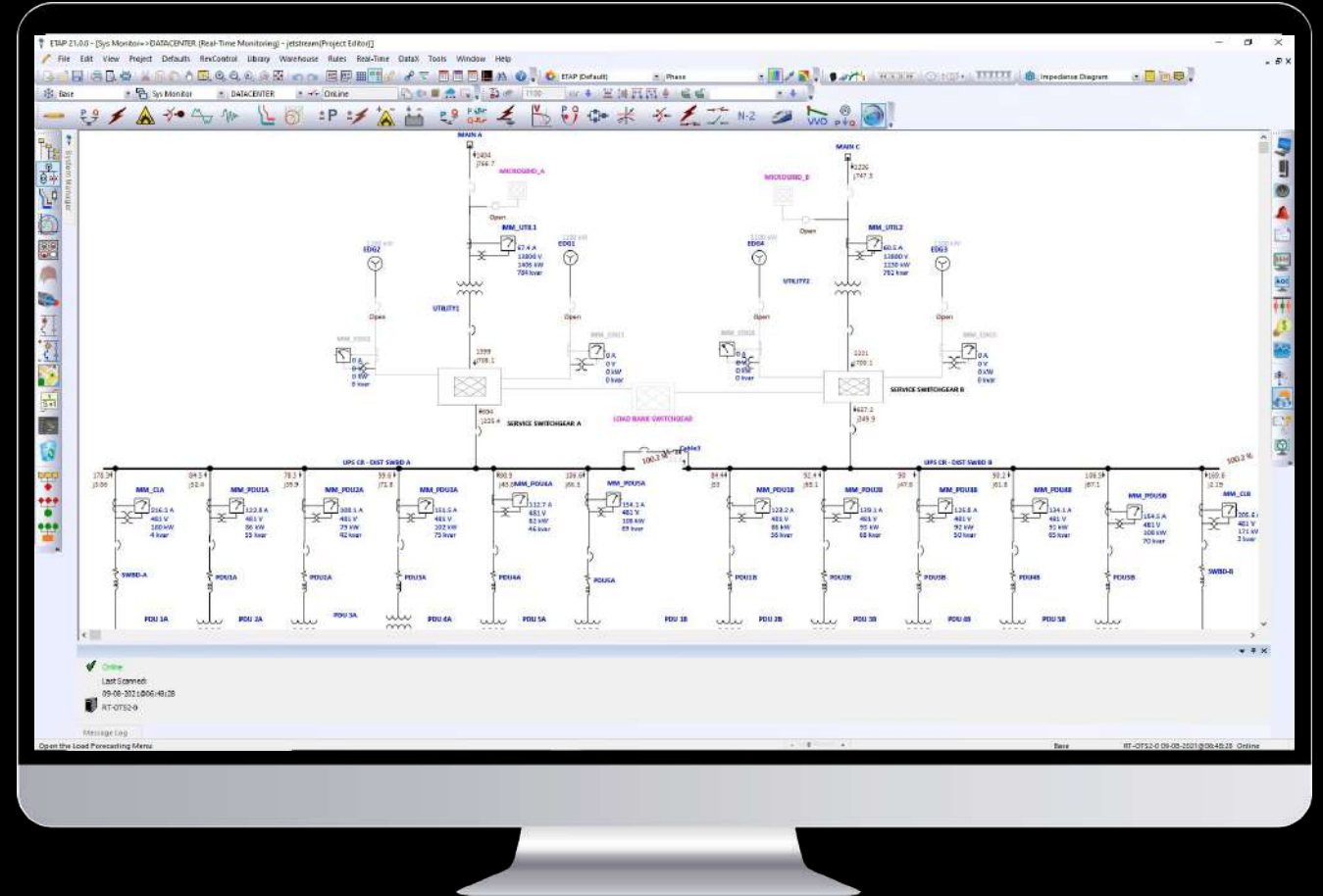


Situational Intelligence

Proactive Predictive Analysis for Operator Situational Intelligence

ETAP Situational awareness is the critical app for control room operators for secure and efficient smart grid/power system operation.

- Continuous data sense-making is critical for ensuring the stability of the power system
- ETAP Digital Twin combines network, electrical model, and simulation results with time series data to better mimic and control expected and unexpected parameters in electrical operation.

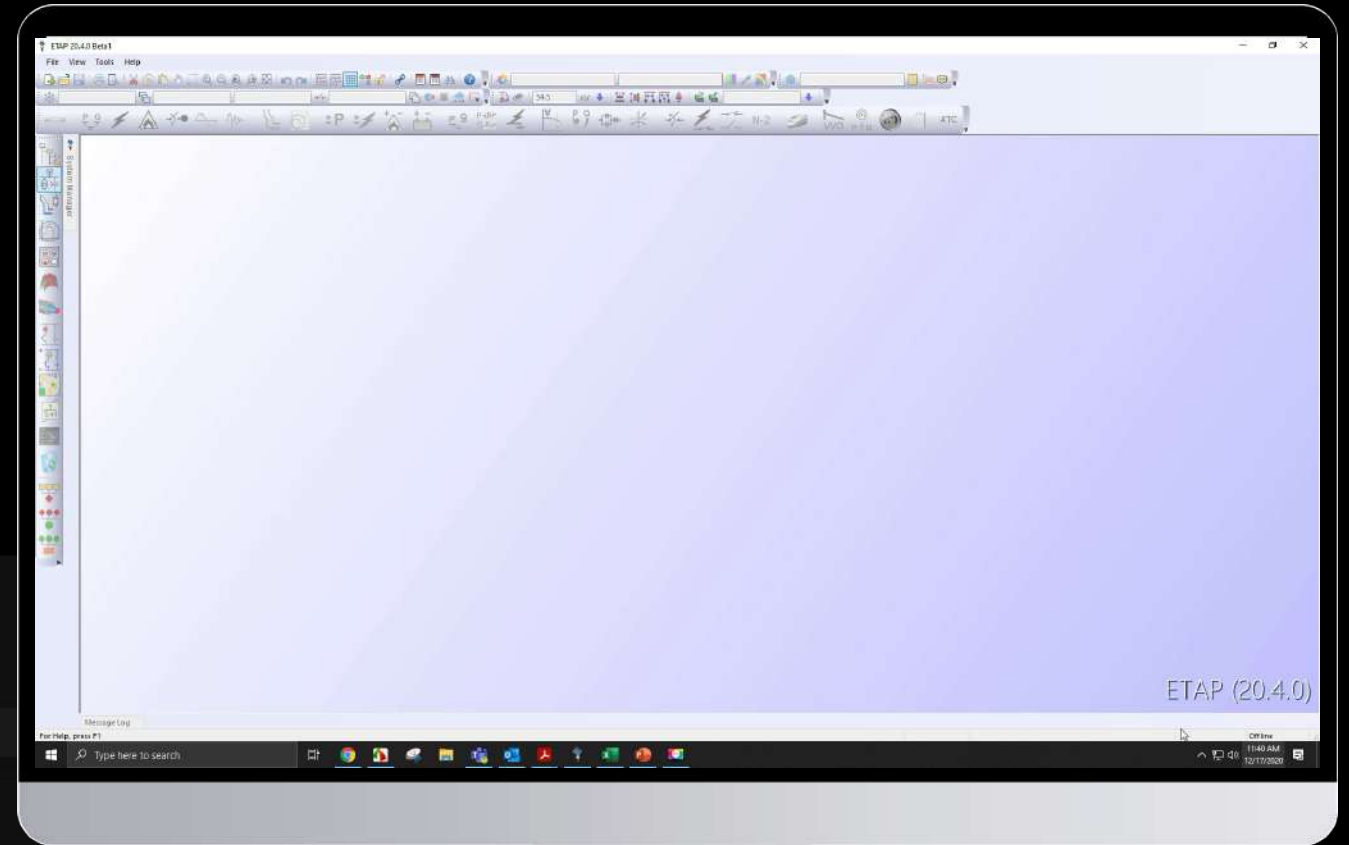


Digital Protection & Asset Management

Integrated Automated Protection, setting & Fault Management

eProtect™ is a centralized enterprise protection asset management solution with real-time connectivity to field assets and ETAP Protection & Coordination modules to manage location, information and settings throughout the lifecycle of protective relays and electrical assets.

- Increased data quality & access management
- Automatic processing & setting file generation
- Relay setting change management
- Protection system maintenance plan
- NERC compliance summary reporting
- Relay settings dashboard & notifications
- Multi-user environment for relay management
- Protection visualization & evaluation
- Health monitoring & maintenance
- Integrated with Advanced Fault Analysis System



We are solving industry challenges through Unified Electrical & Instrumentation Lifecycle



Integrated platform for the project Lifecycle



Up to 40% savings from Design to Operate & Maintain



Single Source of Truth for different stakeholders



Seamless project commissioning & Handover



Cross Discipline Engineering & Integration



Unified Digital Operation & Maintenance

Thank you

